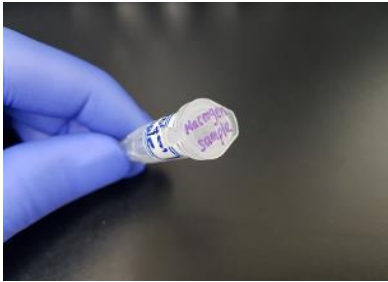


MacroGen Sample Packing Guideline

Shipping Samples in 1.5mL Tubes



Label your sample name on the side of the tube and top of the cap.



Wrap the lid tightly with parafilm to prevent evaporation.

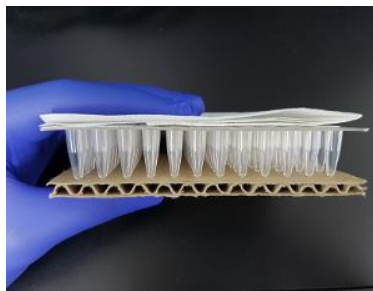


Place sealed tubes in a 50ml conical tube and use tissue or cotton balls.

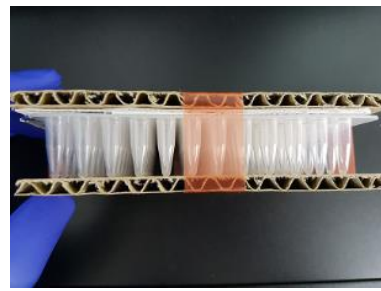
Shipping Samples in 96-well Plates: Protecting the Plate (Recommended)



Seal your 96-well plate with strip caps. Cover the plate using aluminium sealer to avoid any leakage.



*To avoid any physical damage or leakage, cover the top of the plate with a *paper* towel.*



*Cover the top and the bottom of the plate with panel for *additional* protection.*

Using Dry ice or ice packs for RNA



Use dry ice or blue ice packs for temperature-sensitive samples such as RNAs.



Sample Shipment

ATTN : Ms. Olivia Han,
Unit 435/14-16 Lexington
Drive, Bella Vista NSW 2153
Australia